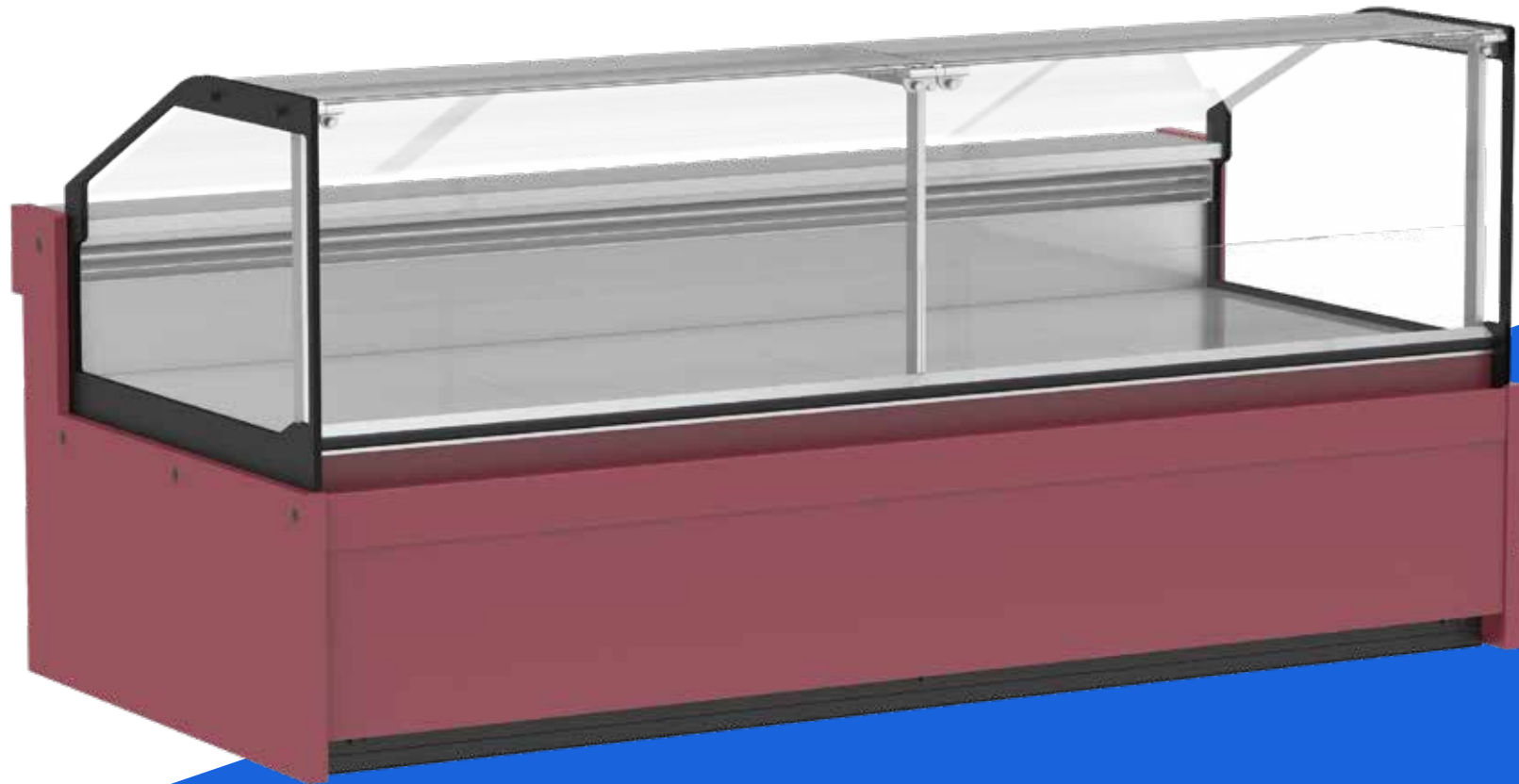




# TONEY

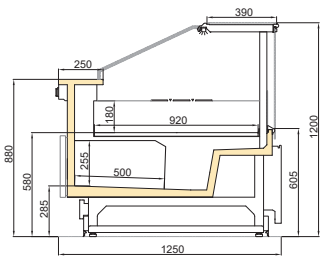
*Refrigerated Serve Over Counter With Storage*



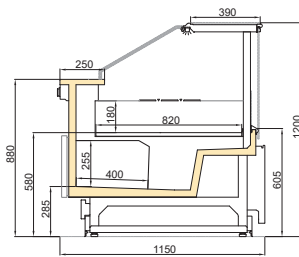
Refrigerated Serve Over Counter With Storage

# TONEY

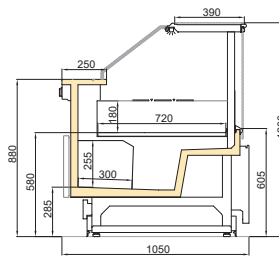
## Technical Details



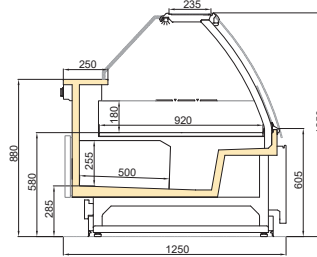
TONEY 900 FG



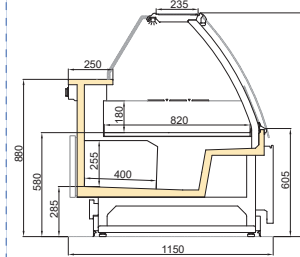
TONEY 800 FG



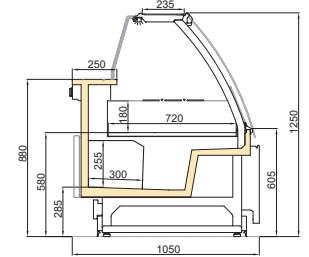
TONEY 700 FG



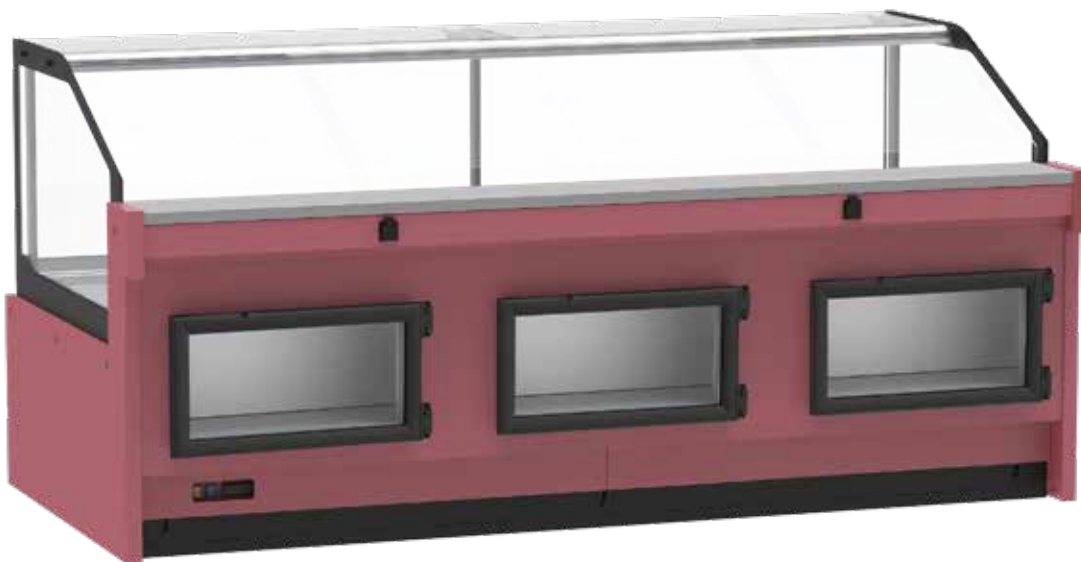
TONEY 900 CG



TONEY 800 CG



TONEY 700 CG



Available Modules					
Length(mm/in)	937/36.8	1250/49.2	1875/73.8	2500/98.4	3750/147.6
Side panel(mm/in)	40/1.57	40/1.57	40/1.57	40/1.57	40/1.57
Operating Temperatures			Ambient Conditions		
M1 (-1/+5 °C) - M2 (-1/+7 °C)			25°C / 60% RH (EN ISO 23953-2)		

