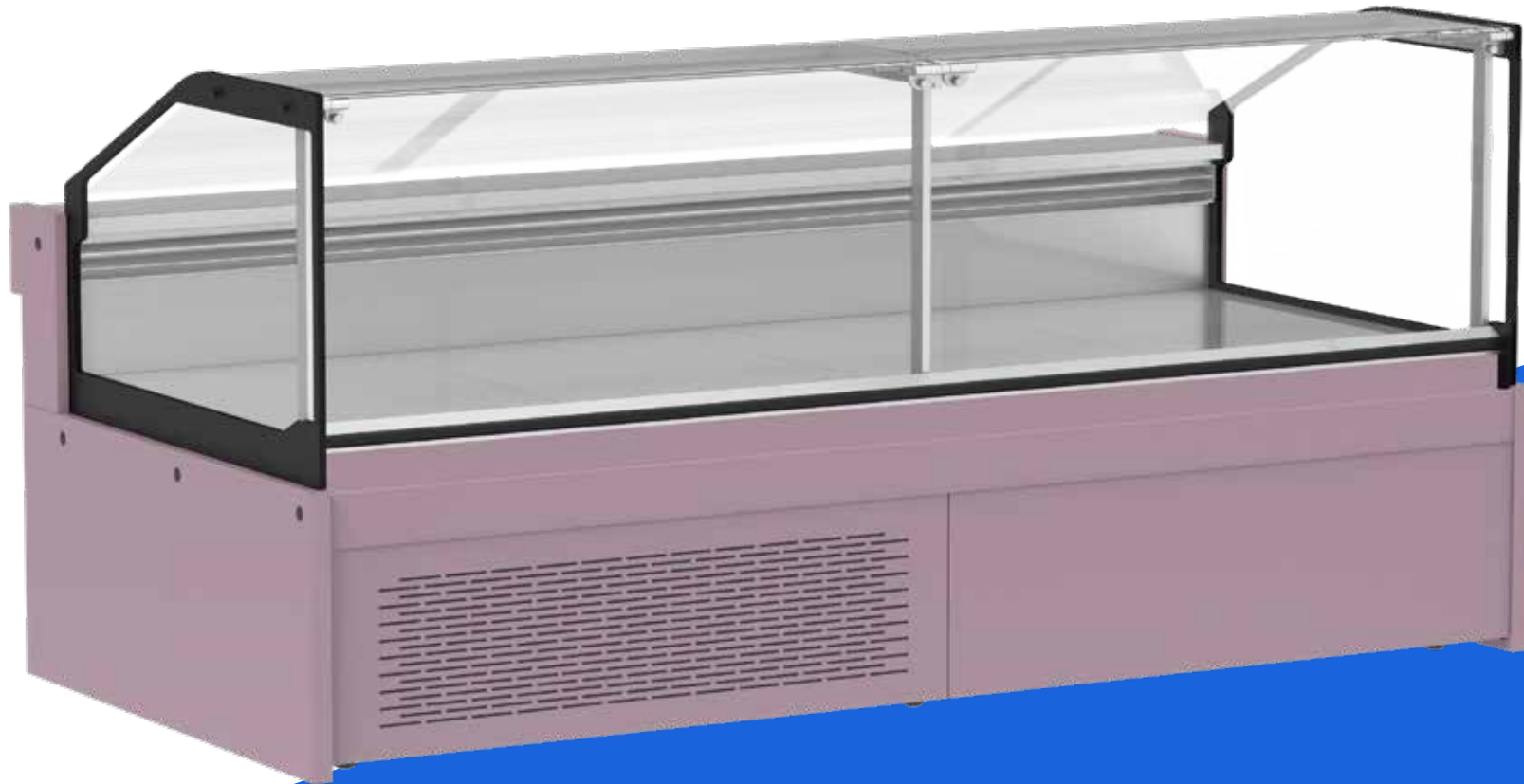




HAWKES

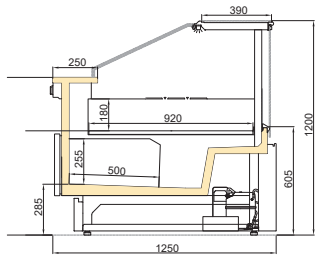
Plug-in Refrigerated Serve Over Counter With Storage



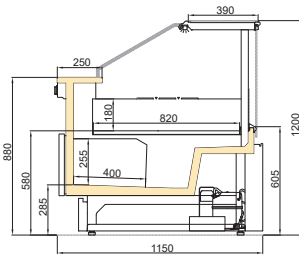
Plug-in Refrigerated Serve Over Counter With Storage

HAWKES

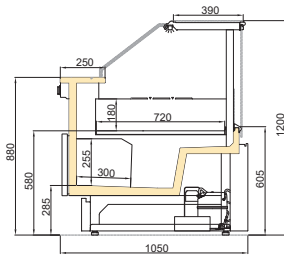
Technical Details



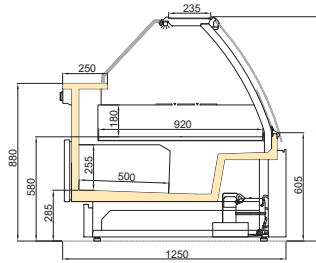
HAWKES 900 FG



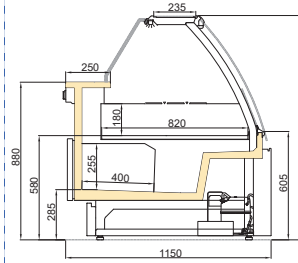
HAWKES 800 FG



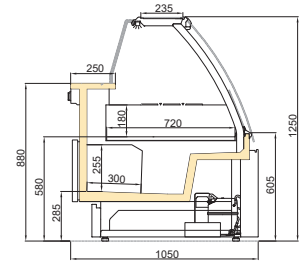
HAWKES 700 FG



HAWKES 900 CG



HAWKES 800 CG



HAWKES 700 CG



Available Modules				
Length(mm/in)	937/36.8	1250/49.2	1875/73.8	2500/98.4
Side panel(mm/in)	40/1.57	40/1.57	40/1.57	40/1.57
Operating Temperatures		Ambient Conditions		
M1 (-1/+5°C) - M2 (-1/+7°C)		25°C / 60% RH (EN ISO 23953-2)		

